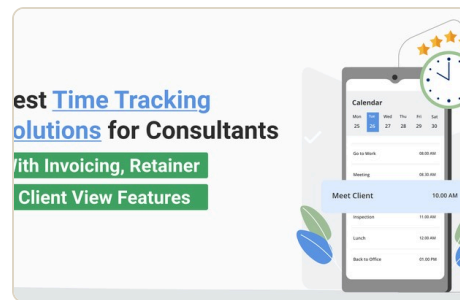
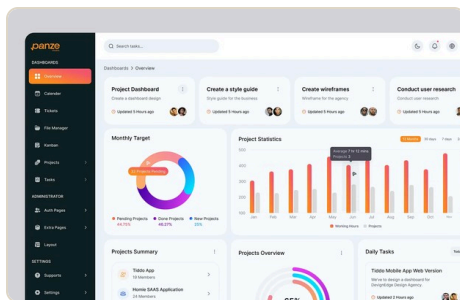
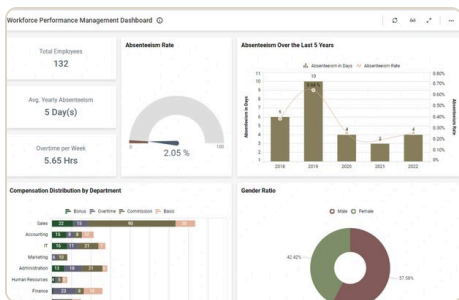


CASE STUDY · MODERN SAAS

Bevel OS

How Prototype helped move from ambiguous goals to shipped software.



Situation

Bevel Workforce needed to replace fragmented agency tooling (including Jira) with a credible SaaS foundation before product-market fit was proven.

Constraints

Limited budget (~\$20k), three-month window, and need for both internal staff workflows and transparent client-facing delivery surfaces.

What we did

Designed and built Core (work management, time tracking, retainer calculations) and Edge (transparent client delivery and reporting) as a multi-tenant Agency Operating System.

Deliverables

Multi-tenant SaaS with authentication, invite systems, client/staff portals, retainer logic, and workflow infrastructure.

Highlights

- Core — internal work management, time tracking, retainer calculations
- Edge — client-facing delivery transparency and reporting
- Shipped in ~3 months on ~\$20k budget
- Moved from internal UAT to real 0→1 product

Outcome: Immediate operational savings and client-facing value — Bevel went from internal testing to a shippable Agency OS in roughly three months.

Live product: <https://bevelworkforce.com>

Talk about a similar build

<https://prototypevshop.ca/contact/?interest=build>

